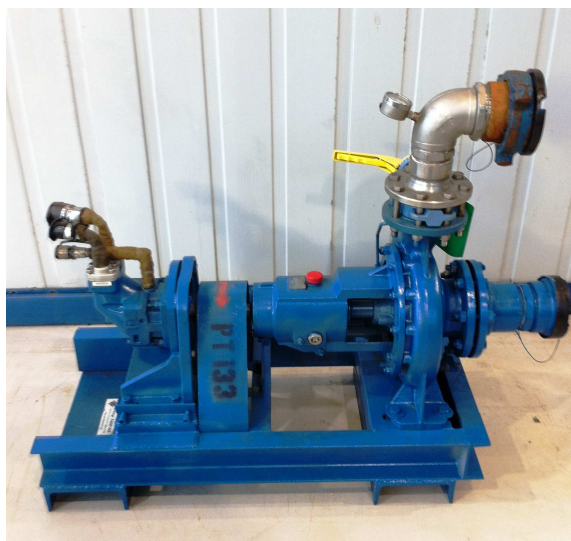


PT- 133 : 40 kW Hydr.Centrifugal Pump Unit
PT- 133 : 40 kW Hydr.Sentrifugal Pumpeenhet



Technical Information / Teknisk informasjon		
<i>English</i>	<i>Norsk</i>	
Unit Information	Informasjon om enheten	
Pump Info.	Info. Pumpe	Robuschi RN 80-250 TMK
<i>Pump Serial No.</i>	<i>Serienummer til pumpe</i>	07-04255
<i>Max pump flow</i>	<i>Maksimal pumpe-flow</i>	3000 l/min
<i>Max Pump Pressure</i>	<i>Maksimalt pumpetrykk</i>	11 bar
<i>Connection Suction</i>	<i>Anslutning Sug</i>	4" Weco FIG 206 Male Half.
<i>Connection Pressure</i>	<i>Anslutning Trykk</i>	4" Weco FIG 206 Female Half.
Motor Info.	Info. Motor	PARKER F12-060
<i>Motor Serial No.</i>	<i>Serienummer til motor.</i>	200704180794
<i>Connection Pressure</i>	<i>Anslutning Trykk</i>	TEMA -7511-12
<i>Connection Return</i>	<i>Anslutning Retur</i>	TEMA -7521-12
<i>Connection Leak</i>	<i>Anslutning Lekk</i>	TEMA -3811-06
Dimensions.(LxWxH)	Dimensjoner.(LxBxH)	1200 x 500 x 500
Weight.	Vekt	Ca 600 kg